

DuPont™ Advion®

ANT GEL

Total Colony Control – Fast



DuPont™ Advion®. Unbeatable Results.

Advion® ant gel profile

- **Broad-spectrum:** controls all key sweet feeders plus additional ant species
- **Highly attractant, homogeneous formulation**
- **Gel locks in moisture** for extended appeal to ants
- **Powered by MetaActive™ compound**
- **Impacts all life stages** for total colony control
- **User Friendly**
 - Reduced-risk active ingredient (US EPA)
 - Does not cause skin or eye irritation
 - First aid measures require no specific intervention
 - Easy application
 - Can be applied to vertical surfaces without running
 - Translucent colour means flexible use - indoors or out

DuPont™ Advion® ant gel is a new, superior ant bait from DuPont™ Professional Products that targets most pest species of ants, including all key sweet feeders plus additional ant species. By combining the power of MetaActive™ and a widely attractive gel formulation, Advion presents a powerful new tool to control a broad-spectrum of ants. The translucent, no odour, non- staining formulation maintains its integrity for extended periods allowing ants to consume more bait over an extended period to result in thorough control of the entire infestation.

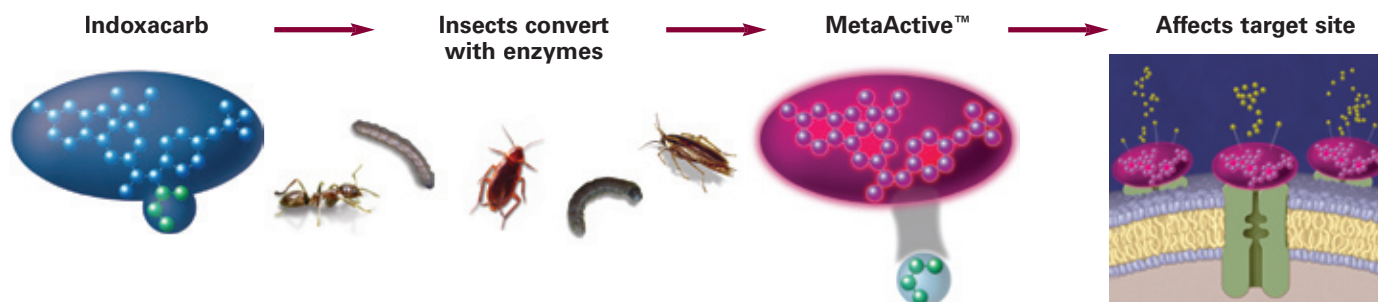
Active Ingredient: Advion® ant gel contains Indoxacarb, a unique active ingredient that is singular in its class of chemistry, the Oxadiazines. This means it performs like no other. This latest technology from DuPont Professional Products is one of only a few insecticides to be classified as Reduced-Risk by the U.S. Environmental Protection Agency based on its excellent environmental and toxicological profile.



The miracles of science™

MetaActive™ compound: Indoxacarb offers a unique mode of action compared to other active ingredients. Metabolic activation is the process in which an insect's own internal enzymes change the molecular structure and attributes of indoxacarb. During this process, insects cleave off the carbomethoxy group from indoxacarb, converting it into

MetaActive™. Normally, molecular degradation reduces the efficacy of insecticides. The opposite is true with indoxacarb; the metabolic activation process actually increases its effectiveness. MetaActive™ is the more powerful form, which attacks the insect's nervous system, resulting in paralysis, followed by death.



Broad spectrum control: The combination of a highly attractive formulation and a potent insecticide, MetaActive™, results in a very effective ant control product. Although Advion® is targeted at controlling sweet feeding ants, even ant species that normally feed on other food sources will sometimes exhibit a feeding preference for honeydew or sweet foods, meaning they can also be effectively controlled with Advion® ant gel.

This broad spectrum control allows Advion® ant gel to effectively control a wide range of ant species. Ant species controlled by Advion® include, but are not limited to: black house ant, pavement ant, Argentine ant, Pharaoh ant, carpenter ant, crazy ant, ghost ant, odorous house ant and red imported fire ant. This broad spectrum of control is illustrated in Charts 1 and 2 by excellent performance in laboratory trials on argentine ant and crazy ant workers. Chart 3 shows that the excellent performance of Advion® ant gel is also observed in field trials (on carpenter ants), even with a partial treatment.

Chart 1

Ant Gel – Argentine Ant Performance

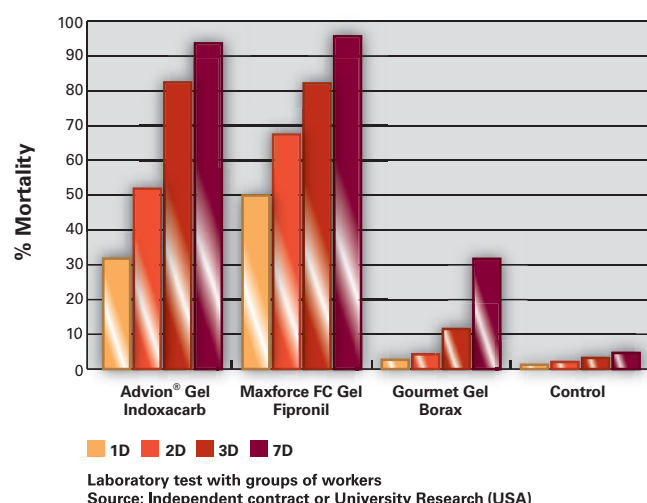


Chart 2

Ant Gel – Crazy Ant Performance

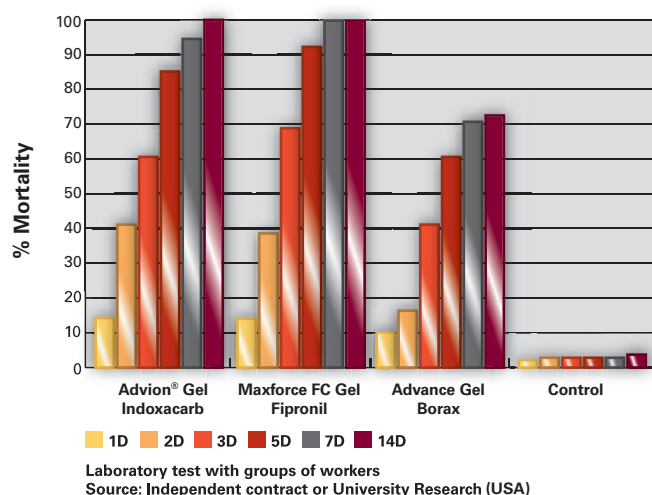
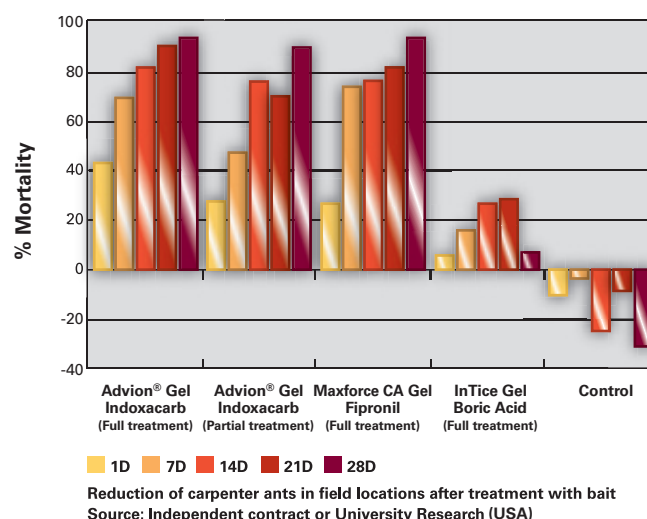
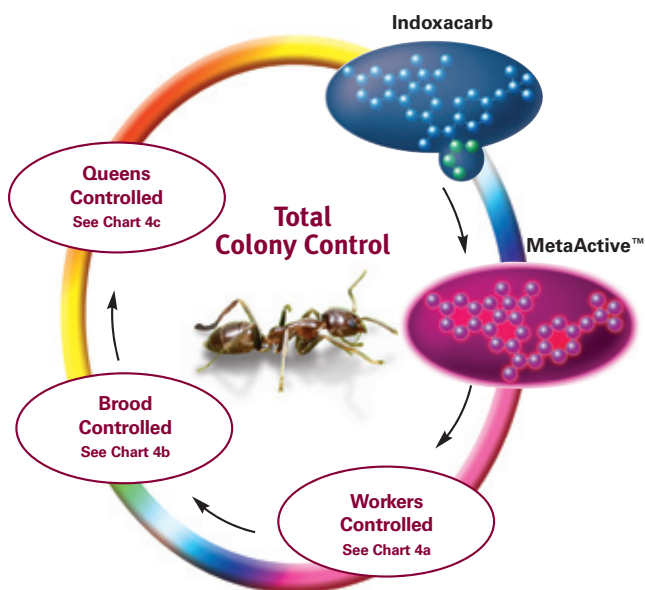


Chart 3

Ant Gel – Carpenter Ant Performance



Total colony control: Ants are social insects often existing as very large colonies. Responsibility for gathering food, caring for young and feeding other colony members is shared among various castes of the colony. By exploiting this behaviour, DuPont™ Advion® ant gel is consumed by foraging ants that return to the nesting site and share it with the rest of the colony, including the queen(s).



Advion® ant gel quickly attracts these foraging ants, assuring the consumption of the bait and the active ingredient, indoxacarb. When ingested, enzymes convert indoxacarb into the highly potent MetaActive™ compound. Although MetaActive™ delivers fast control, tests show foraging ants have time to return to the colony and share the toxicant through trophallaxis with the brood and queen. The potency of MetaActive™ and effectiveness of this process impact all ant life stages. As a result, Advion® provides total colony control.

Chart 4

Ant Gel – Red Imported Fire Ant Performance (Workers)

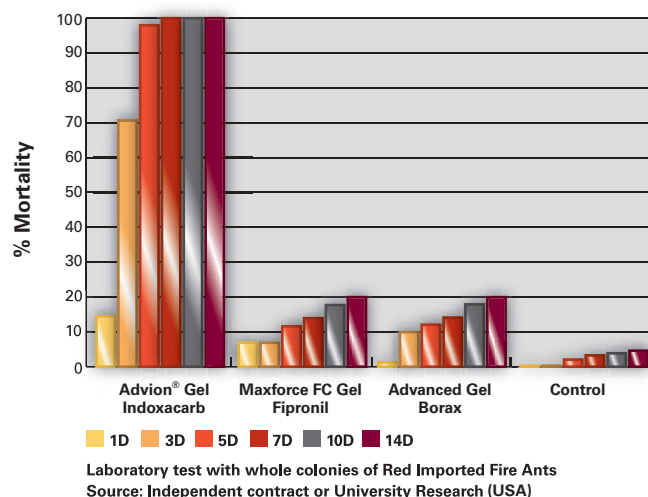


Chart 5

Ant Gel – Red Imported Fire Ant Performance (Brood)

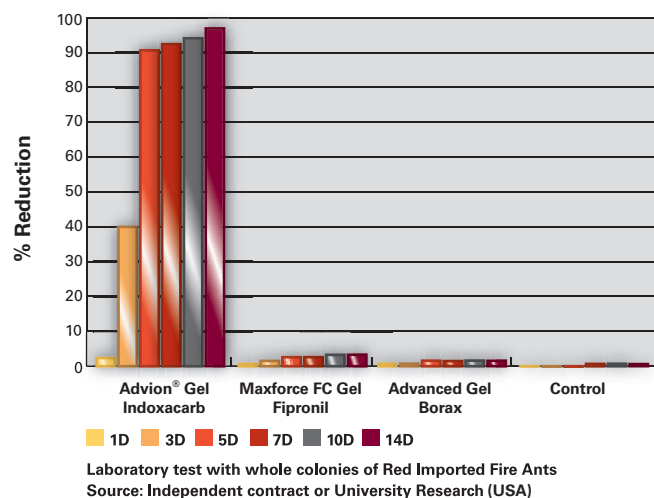
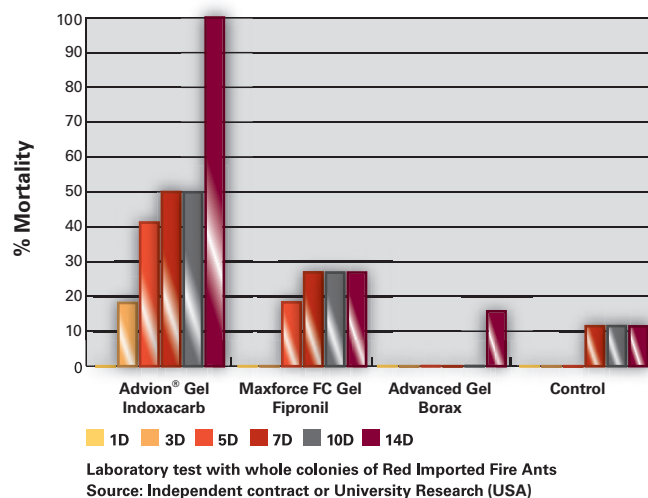
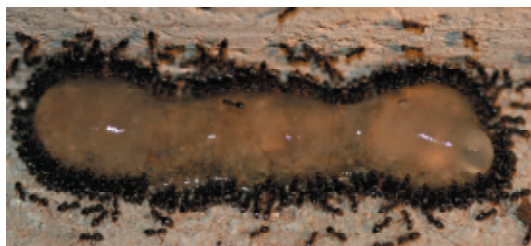


Chart 6

Ant Gel – Red Imported Fire Ant Performance (Queens)



Formulation: Advion® contains an active ingredient, food based carriers and several special attractants. Advion® ant gel was formulated to appeal to the specific feeding preferences of a broad spectrum of pest ants by including a variety of carbohydrates to appeal to their specific nutritional needs. Ants find Advion® so attractive that they will forgo alternative food sources in the field and aggressively recruit to Advion® bait placements. It is not uncommon to see ants completely surround bait placements within minutes after application.



Depending on the ant species, some will suck liquids right from a gel deposit while others will use their mandibles to tear small pieces of gel from the deposit.

Advion® ant gel is highly attractive to ants immediately upon application and remains palatable for an extended period. However, the majority of ant feeding activity should occur within the first 24-72 hrs after placement. If bait deposits become too dry, moisture in the form of dew, high humidity, or light rain will immediately rehydrate an old deposit.

Application sites: DuPont™ Advion® ant gel can be used indoors or outdoors applied as a crack and crevice or spot treatment in residential, commercial and industrial buildings including; farm buildings, food handling/processing establishments, factories, warehouses, supermarkets, hospitals, schools, homes, offices, restaurants, retail outlets, hotels, motels, store-rooms, transportation equipment such as aircraft, trains, ships, boats, buses and other situations which fall within these definitions.

Placement of Advion® ant gel: Deposits should be placed as spots (0.1 – 1.0 grams or approx. 5mm dia.) or as lines (approx. 3mm wide by 5cm long). Several placements should be made to all active trails identified with the infestation. Placements closer to nest sites will be consumed more efficiently than placements further away from nest sites. An attempt should be made to get as much bait to the population as possible.

Effective locations for gel placement include: window sills, door frames, exterior wall edges and ledges, soffit areas, under sinks and cabinets, along counter edges, sides of porches and decks, and patios.

Recommendations for effective ant control: Apply gel as lines or spots to active foraging trails or adjacent to nest sites. If indoors, place bait deposit along foraging trail closest to an exterior wall to minimize ant invasion further into the interior. Do not disrupt the natural trailing and recruitment behaviour during application – the gel can be placed on vertical surfaces if necessary, without running.

Watch for attraction and recruitment within minutes after application. If bait placement becomes overcrowded with ants, apply additional spots or lines. Avoid applying gel in hot, open, sunny areas. Store bait products in cool, dry locations for longest usage. Do not spray or contaminate bait placements with other insecticides.

Storage and Clean up: Advion® ant gel has been developed to withstand the toughest environments while remaining a powerfully attractive bait. However, as with all bait products, Advion® ant gel should be stored away from high-heat environments. If product is stored at high temperatures (above 40°C), it should be brought to room temperature prior to application for best results.

Advion® ant gel is a translucent gel that has no odour and will not stain. Removal of unnecessary deposits can be achieved by washing with soap and water. Dispose of empty or used syringes in the garbage.

For more information:

To learn more about DuPont™ Advion® ant gel, please call Dr Phil Ridley, Asia Pacific Business Manager, DuPont Professional Products on +61 2 9923 6021 or visit us at www2.dupont.com/Professional_Products/en_US/

This reference guide is based on US data and is not intended as a substitute for the product label for the products referenced herein. Product labels for the above products contain proper precautions, directions for use and product warranty and liability limitations that must be read before using the product. Applicators must be in possession of the product label(s) at the time of application. Always read and follow all label directions and precautions for use when using any pesticide.

DuPont™ ant gel is not registered/available in all countries.

The information contained within this guide is based on data registered and applicable in the US and may not be applicable in every country. Copyright 2007 DuPont. All rights reserved. The DuPont Oval Logo, DuPont™, The miracles of science™, Advion™ and MetaActive™ are registered trademarks or trademarks of DuPont or its affiliates. MaxForce is a registered trademark of Bayer AG. Gourmet Ant Bait Gel is a registered trademark of Innovative Pest Control Products. Advance is a registered trademark of Whitmire Micro-Gen Research Laboratories, Inc. InTice is a trademark of Rockwell Labs Ltd. Clemson University, United States – USDA Cooperative Extension Slide Series, www.forestryimages.org



The miracles of science™